

# LASSO THE LINGUISTIC ASSOCIATION OF THE SOUTHWEST Newsletter

Volume 41, No. 1

<https://lassoling.org/index.html>

Spring 2022

---

## THANK YOU, VIRTUAL ARRANGEMENTS ORGANIZING COMMITTEE!

---

The 50th Annual Meeting of the Linguistic Association of the Southwest was our second virtual conference. Thanks to the dedicated and hard-working Virtual Arrangements Organizing Committee, we were able to offer a great meeting September 23rd-25th, 2021 while still dealing with the pandemic, the uncertainties surrounding the lifting of stay-at-home orders, vaccines, masking, social distancing and the toll of all lives lost. We also did not lose sight of the social injustices that have not subsided despite a worldwide pandemic. We continue to be committed to our research work, to our graduate students and junior faculty. As part of this commitment, our Fall meeting offered a space to share research work and receive feedback given that many conferences were still postponed, canceled and that many of our members have seen their developmental funds substantially cut. Our 2021 annual meeting captured all these concerns in its theme: "Interconnectedness in linguistics: Building bridges between language research and language activism".

We were honored to have had two keynote speakers: Marianne Mithun, University of California, Santa Barbara and Norma Mendoza-Denton, University of California, Los Angeles.

---

## MEMBERSHIP RENEWAL TIME!

There is no better time than the present time to renew your membership. If you prefer to renew by check, there is a Membership Renewal Form at the end of this newsletter that you can print and send. You can also renew your membership online:

<https://lassoling.org/membership/>

Membership in LASSO demonstrates commitment to the study of linguistics and provides scholars and students alike the opportunity to develop professional friendships, to obtain information about teaching and research, and to exchange ideas and network with each other. LASSO members receive two newsletters per year and two issues of the International Journal of the Linguistic Association of the Southwest. Presentation of papers at the annual LASSO conference is a privilege of membership, and only those who are LASSO members may have their work published in IJLASSO. Members in good standing may vote and hold office

---

---

## HELMUT ESAU AWARD

### DESCRIPTION

This award is named in honor of Helmut Esau, who was active in the early days of LASSO. Professor Esau died in an automobile accident shortly after he was elected to the LASSO presidency. His colleagues at the time established the Esau Award to commemorate his contributions to the Linguistic Association of the Southwest and the profession at large.

### ELIGIBILITY

Undergraduate and graduate student presenters can submit their revised, polished paper for consideration for the Helmut Esau Award for best student paper.

- To be an undergraduate or graduate student
- Presented a paper in the 2021 Annual Meeting
- Be the sole author of the paper or have co-authored it with other student(s).

### AWARD

The award is given to the best of all high-quality submissions received. Recipients of this prestigious accolade receive a \$400 cash award (more directions on our LASSO website <https://lassoling.org/conference/>).

### SUBMISSION

Now is an excellent time to revise your paper!

Submit your polished paper to this year's LASSO President, Margarita Jara ([margarita.jara@unlv.edu](mailto:margarita.jara@unlv.edu)). Papers must be submitted to the President by March 15".

In your email subject line, please write YOUR NAME -LASSO HELMUT ESAU AWARD. Please submit your paper and information in two separate documents as follows:

#### *1. Information*

- 1.1. Your name(s)
- 1.2. Title of your paper
- 1.3. School Affiliation
- 1.4. Contact email

#### *2. Paper*

- 2.1. Title
- 2.2. Eliminate any references to you within the paper
- 2.3. Omit the acknowledgments
- 2.4. Preferred format: Language Style (see Language Style Sheet)
- 2.5. Papers should not exceed 8,000 words including footnotes.

The award recipient will be announced in our LASSO Annual Meeting 2022.

---

---

## NEWS ABOUT MEMBERS

**Rafael Orozco** shares the recent publication of a chapter: Orozco, R. 2022. "The Expression of Futurity in Spanish: An Empirical Investigation," in *The Routledge Handbook of Variationist Approaches to Spanish*, edited by Manuel Diaz-Campos, pp. 315-327. London: Routledge. (<https://www.taylorfrancis.com/chapters/edit/10.4324/9780429200267-29/expression-futurity-spanish-rafael-orozco?context=ubx&refId=a97035f6-8aae-4755-b768-3af8742ee235>)

**Elly Van Gelderen** has a new book!: *Third Factors in Language Variation and Change* (<https://www.cambridge.org/core/books/third-factors-in-language-variation-and-change/A3627DDDFB0304B23E8595429933E7BF>).

**Mark Waltermire** and **Kate Bove** (NMSU) are editing their book *Mutual Influence in Situations of Spanish Language Contact in the Americas*. for Routledge. It is scheduled to come out later this year. This collection focuses on the structural results of contact between Spanish and Maya, Quechua, Guaraní, Portuguese, and English as spoken in the Americas. It not only explores the various ways in which these languages affect the linguistic structure of Spanish in situations of language contact, but also how Spanish impacts their linguistic structure. The collection addresses potential mutual linguistic influences on the lexicon, morphosyntax, phonology, semantics, and pragmatics of Spanish contact pairs (Spanish-Maya, Spanish-Quechua, Spanish-Guaraní, Spanish-Portuguese, and Spanish-English).

Michelle Ramos Pellicia and Sharon Elise published the chapter "Blanqueamiento Dreams, Trigueño Myths, Refusal of Blackness" in *The Spanish Language in the United States. Racialization, Rootedness, and Resistance*, edited by José Cobas, Bonnie Urcioli, Joe Feagin, and Daniel Delgado for Routledge.

## CONGRATULATIONS TO ALL OF OUR MEMBERS FOR ALL THESE ACCOMPLISHMENTS

If you have published a book, other news to report about yourself, or if you would like to publicize an event that would be of interest to other LASSO members, please send a message to: Michelle F. Ramos Pellicia at [lasso.executive.director@gmail.com](mailto:lasso.executive.director@gmail.com) for inclusion in the next newsletter.

---

# LASSO 2022 ANNUAL MEETING

## *The Role of the Linguist in Society*

Sept. 22-24

Cleveland State University

### Call for papers:

LASSO, the Linguistic Association of the Southwest, invites abstract submission for papers and group panels for its 51st Annual Meeting to be held at Cleveland State University on September 22-24, 2022.

For more information and to submit an abstract, visit:

[https://engagedscholarship.csuohio.edu/lasso\\_meeting/lasso\\_2022/](https://engagedscholarship.csuohio.edu/lasso_meeting/lasso_2022/)

**Submission Deadline: May 15, 2022**

### Keynote Speakers:



Maricel Santos  
San Francisco State  
University



Silvina Montrul  
University of Illinois  
at Urbana-Champaign



Margarita Jara  
(presidential address)  
University of Nevada,  
Las Vegas



**CLEVELAND STATE  
UNIVERSITY**



Linguistic Association  
of the Southwest



---

**Call for papers: LASSO 51st ANNUAL MEETING, 2022**

**Conference Theme: The Role of the Linguist in Society**

**Conference Dates: September 22-24, 2022**

**Location: Cleveland, Ohio**

**Submission Deadline for panels: May 15, 2022**

**Abstract Submission Deadline: May 15, 2022**

**Abstract submission:**

**[https://engagedscholarship.csuohio.edu/cgi/ir\\_submit.cgi?context=lasso\\_meeting](https://engagedscholarship.csuohio.edu/cgi/ir_submit.cgi?context=lasso_meeting)**

**Meeting Description**

LASSO, the Linguistic Association of the Southwest, invites abstract submission for papers and group panels for its 51st Annual Meeting to be held at Cleveland State University on September 22-24, 2022. We welcome papers in all areas of linguistics including, but not limited to applied linguistics, linguistic variation, languages in contact, language policy and planning, language attitudes and ideologies, syntax, phonetics and phonology, etc. This year we especially encourage papers addressing any of the following topics: language in health care, language in education, language and social justice, community languages in the Midwest and the Northeast, language revitalization, and sociolinguistics. Submissions by junior faculty and graduate students are especially welcome. Graduate students who present their work at the conference are eligible for the Helmut Esau Prize, which includes a \$400 award.

**Keynote Speakers**

Maricel Santos, San Francisco State University

Silvina Montrul, University of Illinois at Urbana-Champaign

**Presidential Address**

Margarita Jara, University of Nevada, Las Vegas

**Presentation Format**

Presentation time for papers will be 20 minutes plus 10 minutes for discussion. Abstracts may be in English, or Spanish. Presentations should be given in the same language as the abstract. Only one abstract as a single author and a second as co-author will be accepted from any one individual. Proposals for complete panels with multiple speakers must fit within the 90 minutes time frame of the conference presentations.

**Submission Guidelines**

- Abstracts can be submitted through this website from February 15, 2022 to May 15, 2022.
  - Papers may be delivered in English, or Spanish.
  - Abstracts should be single-spaced in 12-point Times New Roman font not to exceed 500 words.
  - Abstracts need to include the title of the paper and must clearly show the importance of the study, previous research on the topic, the gap in the existing literature, and the study objective and approach.
  - To preserve anonymity during the review process, authors should not include their names, academic affiliation, email address or any other identifier or reveal their identity anywhere in the abstract. This information will be completed in a separate form prior to submission in Easy Abs.
-

- 
- Include the title of the paper, area of research, author names, academic affiliations, and e-mail addresses in the form within the abstract submission system.
  - Submissions should be in pdf format.

## **LASSO MEMBERSHIP**

An individual must be a current LASSO member and present a paper in order to be listed in the conference program. You may pay your dues online at: <https://lassoling.org/membership/> or fill out a membership form available at: [https://lassoling.org/wp-content/uploads/2021/05/membership\\_renewal\\_form.pdf](https://lassoling.org/wp-content/uploads/2021/05/membership_renewal_form.pdf) at the same time you register for the conference online. Membership includes a subscription to the International Journal of the Linguistic Association of the Southwest.

## **EXCEPTION**

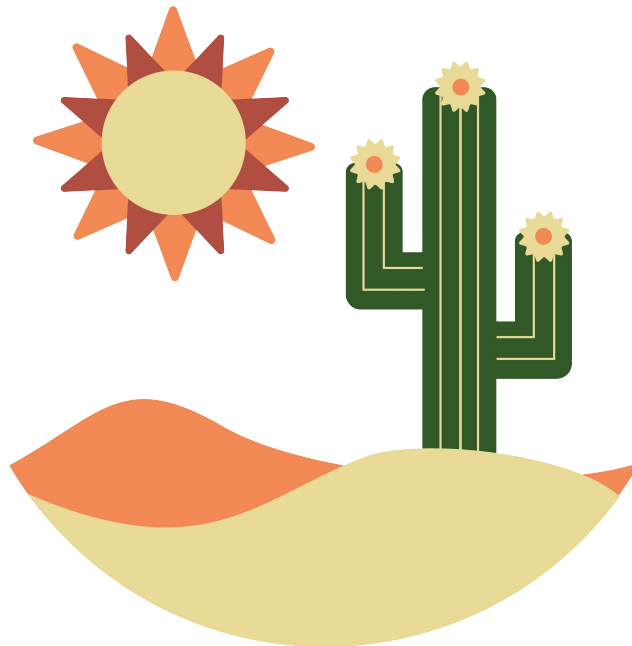
High School educators who wish to attend, and not present a paper, only need to pay the reduced conference dues, i.e. \$35.

---

## **FUTURE LASSO MEETINGS**

LASSOvians who would like to host a future LASSO Conference should contact Executive Director Michelle F. Ramos Pellicia, [lasso.executive.director@gmail.com](mailto:lasso.executive.director@gmail.com) for more information. Proposals may be presented at the Business Meeting. You do not have to be on the Executive or any other committee to present a proposal to host a LASSO Conference. If you are interested in hosting a conference, we encourage you to let us know!

---



---

# THE INTERNATIONAL JOURNAL OF THE LINGUISTIC ASSOCIATION OF THE SOUTHWEST

Updates on Volume 42 ns 1-2 (2015)

It is with great excitement that we share the new call for papers for Volume 42, Issues 1 & 2 of the International Journal of the Linguistic Association of the Southwest with Antonio Medina-Rivera (a.medinarivera@csuohio.edu) as the new Executive Editor.

The deadline for submissions:

Vol.42.1: March 30th, 2022

Vol.42.2: June 30th, 2022

For more information or to submit a paper, visit:

<https://engagedscholarship.csuohio.edu/ijlasw/>

The International Journal of the Linguistic Association of the Southwest (ISSN 0737-4143) is published semiannually in June and December by the Linguistic Association of the Southwest. Volumes 1-5 were published as The Journal of the Linguistic Association of the Southwest. Volumes 6-30 were published as the Southwest Journal of Linguistics. Volumes 36-41 do not exist due to a delay in publications. Starting with Volume 42, the journal is changing to an open access online format. For back issues you can contact the Editor Antonio Medina-Rivera at a.medinarivera@csuohio.edu .

Subscription to the International Journal of the Linguistic Association of the Southwest is included with membership in the Association. Individual membership dues are \$40 per calendar year. Student memberships are \$25.00 per calendar year, with proof of student status. Life memberships are \$450.00.

## Who can submit?

Anyone may submit an original article to be considered for publication in International Journal of the Linguistic Association of the Southwest provided he or she owns the copyright to the work being submitted or is authorized by the copyright owner or owners to submit the article. Authors are the initial owners of the copyrights to their works (an exception in the non-academic world to this might exist if the authors have, as a condition of employment, agreed to transfer copyright to their employer).

## General submission rules

Submitted articles cannot have been previously published, nor be forthcoming in an archival journal or book (print or electronic). Please note: "publication" in a working-paper series does not constitute prior publication. In addition, by submitting material to International Journal of the Linguistic Association of the Southwest, the author is stipulating that the material is not currently under review at another journal (electronic or print) and that he or she will not submit the material to another journal (electronic or print) until the completion of the editorial decision process at International Journal of the Linguistic Association of the Southwest. If you have concerns about the submission terms for International Journal of the Linguistic Association of the Southwest, please contact the editors.

---

---

**International Journal of the  
Linguistic Association of the Southwest**

**New Open Access/Online Format**

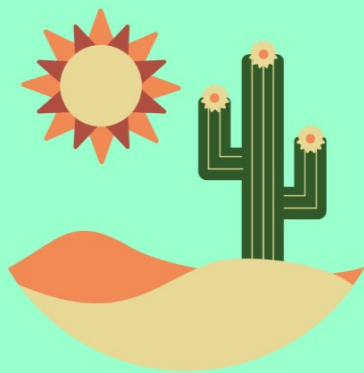
**Call for Papers**

**Volume 42, Issues 1 & 2**

**Executive Editor: Antonio Medina-Rivera, PhD**  
**a.medinarivera@csuohio.edu**

**For more information or to submit a paper go to:**

**<https://engagedscholarship.csuohio.edu/ijlasw/>**



**Issue 1: Submit before March 30, 2022.**

**Issue 2: Submit before June 30, 2022.**



---

**Executive Committee Meeting**  
**Saturday, September 25th, 2021**  
**Meeting Minutes**

**In attendance:** Alba Arias Álvarez, Sheryl Bernardo-Hinesley, Katherine Christoffersen, Jens Clegg, Susana de los Heros, Camilo Díaz, Víctor Fernández-Mallat, Patricia Gubitosi, Margarita Jara, Antonio Medina-Rivera, Michelle F. Ramos Pellicia, Israel Sanz-Sánchez, and Rachel Showstack

**Meeting Minutes**

1. Executive Director Report

- a. Note taker
- b. Newsletter
  - 1. In light of the disruptions brought on by COVID-19, there are numerous news developments and research coming out.
- c. Messaging, research involves this, as organization where we stand, emphasize
  - 1. Anti-Asian Racism
  - 2. Anti-LGBTQ hate

2. President Report

- a. Helmut Esau Award,
  - 1. The president received 5 papers.
  - 2. It was very difficult to determine who would be awarded.
  - 3. Susana states that the evaluation was a global one.
  - 4. As there is nothing in the constitution, but the process has been done by tradition, Jens suggests:
    - a. Have an internal document
    - b. Amend the constitution
  - 5. Several members suggested that the constitution be amended and establish a rubric. Also, details about the award, who was Helmut Esau, and why it is awarded should be detailed.
  - 6. Michelle suggests that the rubric has to do more about the quality of the paper. She notes that the papers submitted keep improving.
  - 7. Moving forward, have clarity: papers vs author as the organization values student professional development, which needs to be explicitly stated.
  - 8. 11 members voted out of 11, award Helmut Esau to the two papers\*, not authors.



---

### 3. Nominating committee

- a. Vacant seats, Israel Sanz, no news. Do not have nominations at this time possible take nominations during the meetings
- b. According to the constitution, the incumbent cannot re-run
  - 1. Executive Committee
    - a. Jens Clegg, Purdue University Fort Wayne (2021)
  - 2. Nominating Committee, nominated himself Jens for this committee
    - a. Israel Sanz-Sánchez, West Chester University (2021)
    - b. Jens self-nominated for the Nominations Committee.

### 4. Vice-President / Program Chair Report

- a. Program details, updates
  - 1. There were 40 reviewers, and 30 accepted to review abstracts.
  - 2. Abstract acceptance and rejection were sent July 2021.
  - 3. 98 abstracts were received. There were 3 reviewers per abstract. There were 4 rejections.
  - 4. Scheduled abstracts are 84 presentations, 3 panels, and 1 special session about the journal.
  - 5. We have 2 keynote speakers and the presidential address.
- b. Recommendations
  - 1. Moving forward, update the list of possible reviewers for future conference. Also, create a list of possible chairs.

### 5. Local/Virtual Arrangements Committee Report

- a. Virtual environment
  - 1. Since last year there were technical difficulties with Accelevents, the organizing committee decide to go with Zoom since colleagues have been using it, familiar navigating it, making it accessible for everyone presenting.
  - 2. Patricia, Margarita, and Israel have been working tirelessly organizing Zoom rooms for the conference.
  - 3. There were only 3 or 4 cancellations.
- b. Recommendations
  - 1. Moving forward, there is a need for involvement of more individuals in the organizing committee. It is very hard task to undertake.
  - 2. The committee wishes to find ways to increase student participation and to encourage participants to register early.

### 6. Treasurer's Report

- a. Current balance
    - 1. The Current Balance is \$69,696.61 which shows that the organization is in good financial shape. Note that this information is from Sept. 13th, after the early bird registration.
-

- 
- a. There are at least 25% paid after that day unaccounted for in this balance.

- i. Collected: memberships, \$3,120
- ii. Conference registrations \$4,780
- iii. Pay keynote speaker \$500
- iv. Logo designer, \$200
- v. Pay journal, volume 34, \$1,000
- vi. Journal printing, \$698.44
- vii. Journal mailing, \$199.41

- 1. We receive donations through overpayment on the registration: \$115 which can be used for the 2 Esau awards.
- 2. The organization still need to pay volume 35, but the invoice has not been received.
- 3. There are monies, written checks, to account in the funds of the organization.

## 7. Development Committee Report

### a. Call for Papers

- i. It was shared to graduate programs in Hispanic Linguistics throughout the nation.
  - 1. Cova took charge of the central area of the US.
  - 2. Sheryl, the West coast, and
  - 3. Alba, the East coast

### b. Webpage

- 1. The committee has successfully designed, through WordPress, consistent to the colors and design of the logo, and migrated to the main domain.
  - a. Each tab is updated accordingly with new developments: newsletter, journal, history, etc.
- 2. The posting of events and announcements is regularly done on Facebook, Instagram, Twitter, and LinkedIn.
  - a. There are more engagements through Twitter. Members retweet some of the posts. The increased number of followers happens during the conference.
  - b. There are only a few engagements on LinkedIn and Instagram.
    - i. Fall 2021:
      - a. Twitter: 50 followers
      - b. Instagram: 23 followers
      - c. LinkedIn: 18 members
      - d. Facebook: 451 members
    - ii. Fall 2020:
      - a. Twitter: 13 followers
      - b. Instagram: 12 followers
      - c. LinkedIn: 16 members

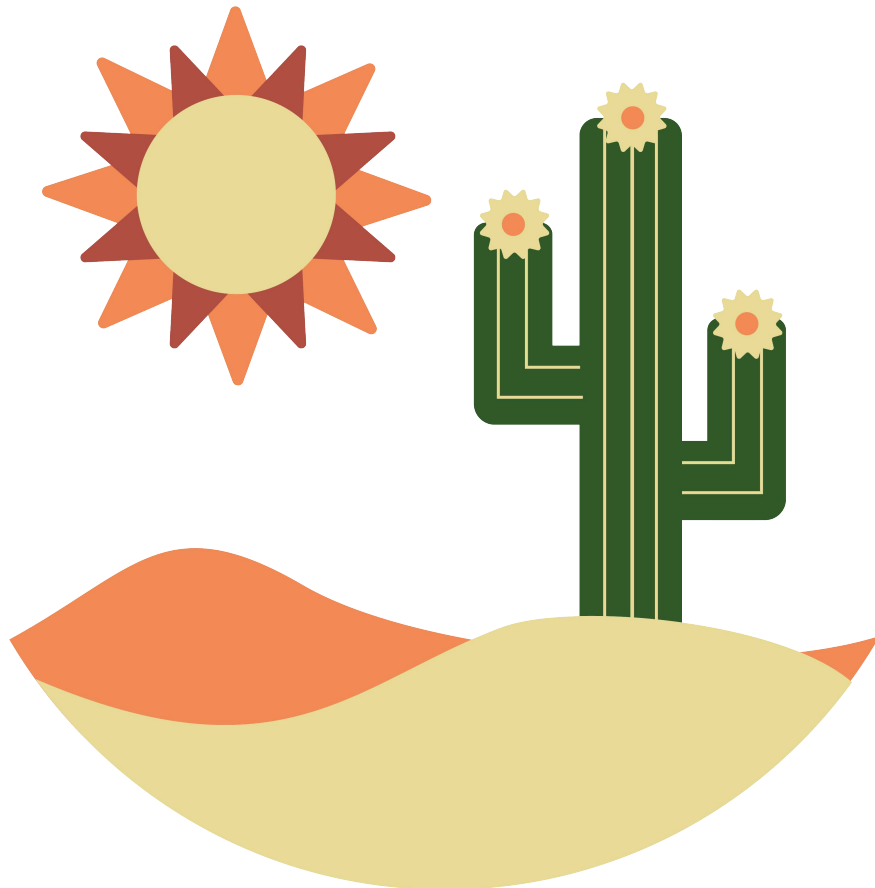
---

c. These are the accounts:

1. Twitter: <https://twitter.com/lassoling>
  2. Instagram: <https://www.instagram.com/lassoling>
  3. LinkedIn: <https://www.linkedin.com/groups/2851787>
  4. Facebook: <https://www.facebook.com/groups/146699991466>
3. The committee plans to add student testimonials of Helmut Esau Award winners on the webpage.

c. Concerns and Ideas

1. The committee has written a statement in solidarity with Asian American and Pacific Islander (AAPI) communities and Lesbian, Gay, Bisexual, Transgender, Gender Non- Conforming, and Non-Binary (LGBTQ+) communities.
  - a. Members await feedback and suggestions for change, so it can be finalized and be posted on the organization webpage and social media accounts. [https://docs.google.com/document/d/1Pd2amZZxfAWCAOqQUkbpEqJrJPjIdeFV\\_48vGLJIK3s/edit](https://docs.google.com/document/d/1Pd2amZZxfAWCAOqQUkbpEqJrJPjIdeFV_48vGLJIK3s/edit)
2. The committee is also discussing including a tab on the website dedicated for donations for student conference registration and membership (a blank button so donors are able to decide how much they wish to donate).



---

## LASSO Account – January-December 2021

**Previous Balance** \$69,696.71

**Deposits**

|                               |                    |
|-------------------------------|--------------------|
| Conferences Registration 2021 | \$4,462.14         |
| Memberships                   | \$5,148.02         |
| Regalias                      | \$366.90           |
| <i>Subtotal 1</i>             | <i>\$79,673.77</i> |

**Debits**

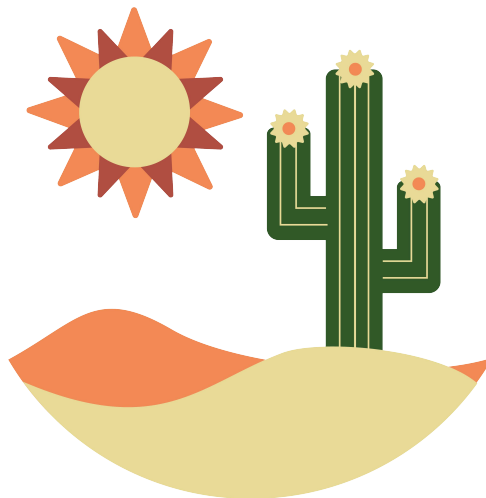
|                         |                   |
|-------------------------|-------------------|
| Wolf design v.34        | \$1,000.00        |
| Diggi Pod v. 34         | \$698.44          |
| Mailing v. 34 (June 21) | \$199.41          |
| Helmut Essau Award (2)  | \$800.00          |
| Keynote Speaker 1       | \$750.00          |
| Keynote Speaker 2       | \$750.00          |
| Wolf design v.35        | \$1,000.00        |
| <i>Subtotal 2</i>       | <i>\$5,197.85</i> |

*Subtotal 1* \$79,673.77

*Subtotal 2* \$5,197.85

**Total** \$74,475.92

---





---

Sincere **THANKS** are extended to those named below who contribute their time and talents as officers and volunteers for the Linguistic Association of the Southwest:

**President**

Margarita Jara, University of Nevada Las Vegas (2022)

**Past President**

Susana de los Heros, University of Rhode Island (2022)

**Vice President / Program Chair & President Elect**

Rachel Showstack, Wichita State University (2022)

**Executive Director**

Michelle F. Ramos Pellicia, California State University San Marcos (2022)

**Treasurer**

Patricia Gubitosi, University of Massachusetts Amherst (2022)

**Executive Committee**

Mark Waltermire, New Mexico State University (2022)

Katherine Christoffersen, University of Texas Río Grande Valley (2023)

Israel Sanz-Sánchez, West Chester University (2024)

**Nominating Committee**

Amàlia Llombart-Huesca, California State Polytechnic University, Pomona (2022)

Rachel Showstack, Wichita State University (2023)

Jens Clegg, Purdue University Fort Wayne (2024)

**Virtual Arrangements Organizing Committee for the 2021 Conference Chair:**

Israel Sanz-Sánchez, West Chester University (2021)

**Development Committee**

Alba Arias Álvarez, Roanoke College (2022)

Sheryl Bernardo-Hinesley, Western Washington University (2022)

Covadonga Sánchez Alvarado, Winona State University (2022)

---

**Your name here**

LASSO owes much of our success to the generosity of time, effort and talents of our members serving as volunteers in various capacities. If you are interested in assisting with the operations of LASSO, please contact Michelle F. Ramos Pellicia,  
lasso.executive.director@gmail.com.

---

---

## International Journal of the Linguistic Association of the Southwest (IJLASSO)

### Executive Editor

Antonio Medina-Rivera, Cleveland State University (2024)

### Associate Editors

Talia Bugel, Purdue University-Fort Wayne

Mercedes Niño-Murcia, University of Iowa

Eva Núñez-Méndez, Portland State University

Rafael Orozco, Louisiana State University

Alberto Pastor, Southern Methodist University

Mark Waltermire, New Mexico State University

### Reviews Editor

Rachel Showstack, Wichita State University

### Editorial Board

Manuel Díaz-Campos, Indiana University

Mary Ellen García, University of Texas-San Antonio (Emerita)

Patricia McGregor-Mendoza, New Mexico State University

Silvina Montrul, University of Illinois at Urbana-Champaign

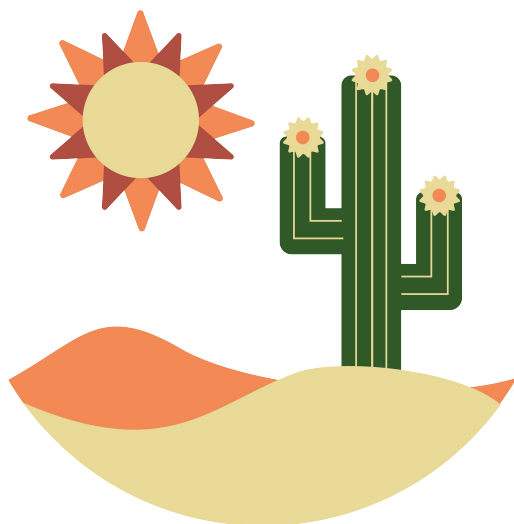
Ana Celia Zentella, University of California-San Diego (Emerita)

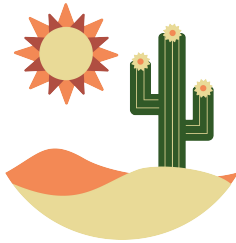
---

**THANK YOU, IJLASSO VOLUNTEERS!!!**

Sincere thanks are also extended to those named below who contribute their time and talents to our journal:

---





# **LASSO** The Linguistic Association of the Southwest

## **2022 Membership Application**\_\_\_\_ **or Membership Renewal**\_\_\_\_ (Please print)

**Name:** \_\_\_\_\_

**Mailing Address:** \_\_\_\_\_  
\_\_\_\_\_  
\_\_\_\_\_

**Institutional Affiliation** (if not given above): \_\_\_\_\_

**Telephone:** Home: (\_\_\_\_) \_\_\_\_\_ - \_\_\_\_\_ Fax: (\_\_\_\_) \_\_\_\_\_ - \_\_\_\_\_  
Office: (\_\_\_\_) \_\_\_\_\_ - \_\_\_\_\_

**E-mail Address:** \_\_\_\_\_

**Annual Dues:** Regular -- \$40 US \_\_\_\_\_  
Student/retired/unemployed -- \$25 US \_\_\_\_\_  
Institutional -- \$60 US \_\_\_\_\_

**Overseas postage surcharge:** \$15 annually \_\_\_\_\_

**Life membership:** \$450 US \_\_\_\_\_

**Tax-deductible contribution** \_\_\_\_\_

**TOTAL ENCLOSED** \_\_\_\_\_

**Make check payable to "LASSO."** Your canceled check will be your receipt. Return this form with your remittance to:

Dr. Patricia Gubitosi, LASSO Treasurer  
422 Herter Hall  
University of Massachusetts Amherst  
161 Presidents Dr  
Amherst, MA 01003

**Visit our website at:** <http://lassoling.org>